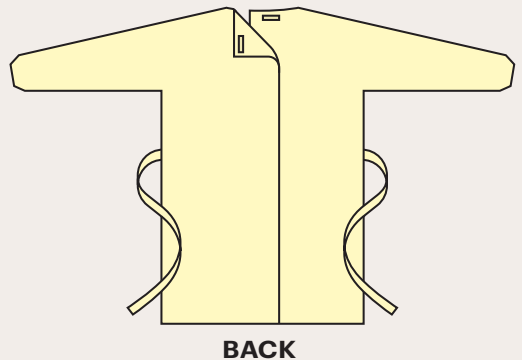
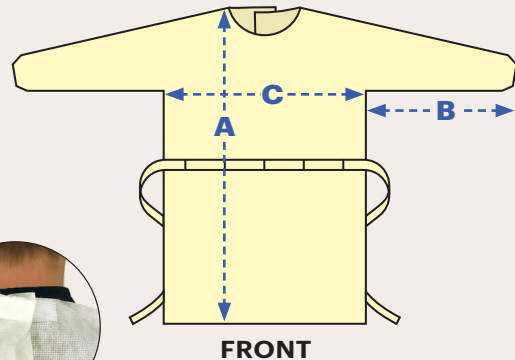


The Guardian Max Level 2 Isolation Gown

These full-coverage, single-use, non-sterile, non-surgical isolation gowns are intended to protect patients and healthcare personnel from the transfer of microorganisms, bodily fluids, and particulate material. Two size options are available to ensure a proper fit. All gowns are 100% sourced and manufactured in the United States of America.

ADG in collaboration with Maddox Defense is proud to offer this 100% sourced and made in the USA isolation gown.



	LARGE	XLARGE
Part Number	ABDL2-L-US	ABDL2-XL-US
A Length	45"	46"
B Sleeve Length	21"	24"
C Chest	27"	30"

Specifications

MATERIALS
Medium-weight Tri-Layer SMS fabric

COLOR
Yellow

DESIGN
Full coverage gown with hook and loop neck closure, gown SMS material attached to the gown for waist tie closure and elastic cuffs

FABRIC WEIGHT
29 GSM

USABILITY
Single Use (Disposable)

STERILIZATION
Non Sterile

DECLARATIONS
Not made with natural rubber latex

CERTIFICATIONS
ANSI/AAMI PB70 - Barrier Level 2

STORAGE CONDITIONS
Store at Room Temperature
Dry Environment
Remain in Original Packaging

SHELF LIFE
10 years



To purchase this gown, contact ADG at info@adg.com.



2550 Auburn Court | info@adg.com
Auburn Hills, MI 48326 | www.adg.com

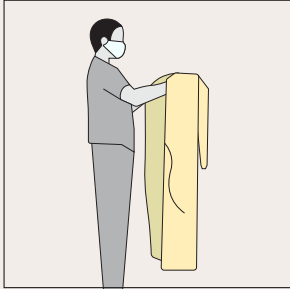
Continuous development may cause the information and specifications contained herein to change without notice. ADG reserves the right to change, modify, or discontinue any products. Images may be slightly different than actual products.



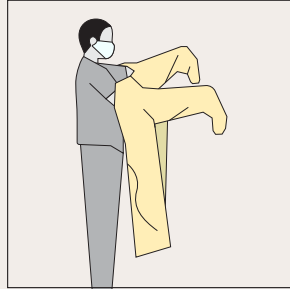
User Instructions

The Guardian Max Level 2 Isolation Gown

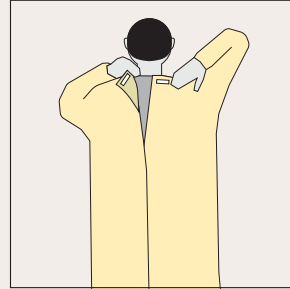
Donning



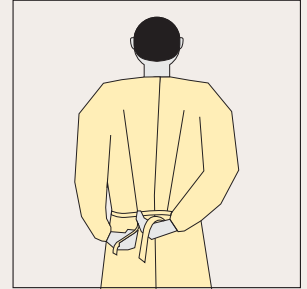
1. Begin by opening the gown. Hold the gown away from the body and allow it to unfold completely.



2. Slip both arms into the sleeve and hands through the elastic cuff. Adjust the front of the gown to fully cover the torso and expose the full back of the gown. Pull out wrinkles and make sure the gown is smooth on your back.

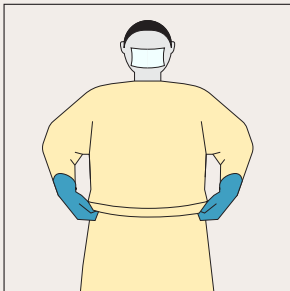


3. To ensure full coverage, tightly fasten the hook and loop and ensure the fabric is overlapped down the back.



4. Grasp the front tie, wrap it around to the back of the gown and tie securely, checking that the material is overlapped to ensure barrier efficacy.

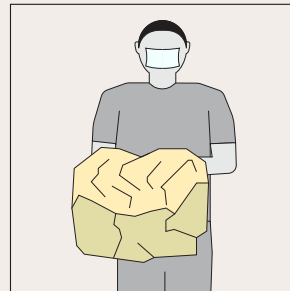
Doffing



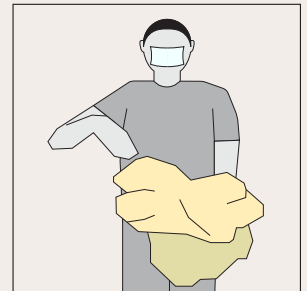
1. To remove the gown, insert your thumbs between the ties and the gown and pull forward to break the ties, touching the outside of the gown only with gloved hands.



2. With both hands grasp the gown in the front from the waist away from your body.



3. While removing the gown, fold or roll the gown inside-out into a bundle.



4. As you are removing the gown, peel off your gloves at the same time, only touching the inside of the gloves and gown with your bare hands. Place the gown and gloves into a waste container.



If the end user has questions concerning the safe operation of this product, please consult the local supervisor or safety program administrator.



User Instructions

The Guardian Max Level 2 Isolation Gown

Donning

1. Begin by opening the gown. Hold the gown away from the body and allow it to unfold completely.
 2. Slip both arms into the sleeve and hands through the elastic cuff. Adjust the front of the gown to fully cover the torso and expose the full back of the gown.
 3. Reach behind the neck to grasp the velcro. Attach the velcro area by reaching behind the neck toward the upper opposite right shoulder. Firmly secure the velcro onto the gown.
 4. Grasp the front tie, wrap it around the back of the gown and tie securely.
-

Doffing

1. To remove the gown, insert your thumbs between the ties and the gown and pull forward to break the ties, touching the outside of the gown only with gloved hands.
2. With both hands grasp the gown in the front from the waist away from your body.
3. While removing the gown, fold or roll the gown inside-out into a bundle.
4. As you are removing the gown, peel off your gloves at the same time, only touching the inside of the gloves and gown with your bare hands. Place the gown and gloves into a waste container.



If the end user has questions concerning the safe operation of this product, please consult the local supervisor or safety program administrator.

